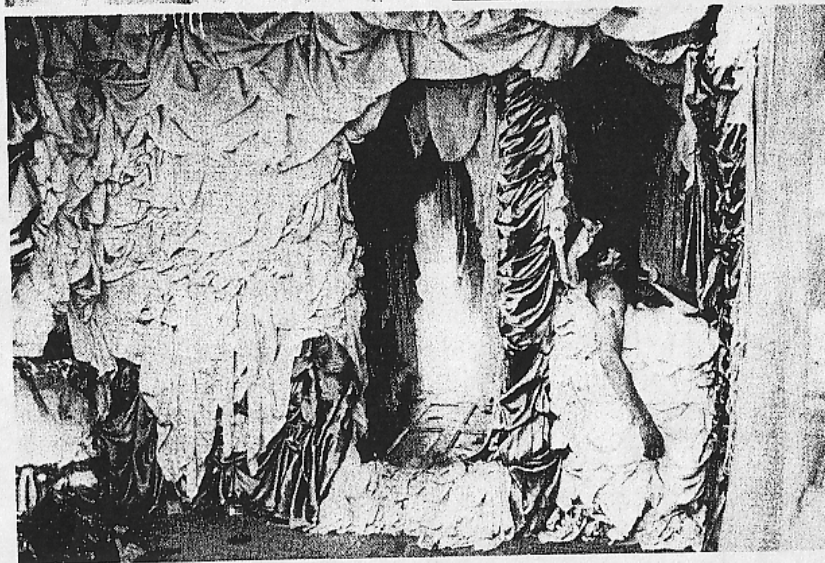
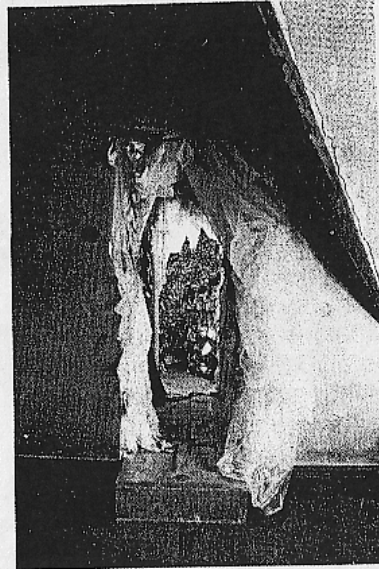


Concept in Performance



*David's Wraith, June 76
P.S.I. Long Island City Center Rooms – Attic with Closet
12' by 19' brown satin and white silk parachute
and lavender Veils – photos – fluorescent. Audio sounds
sometime male model as Marat. Colette*

Colette's subject is never ambiguous, presenting a variation on a Symbolist erotic fantasy of the Mysterious Lady. She creates rooms, grottos of silk – ruffled, curled, piled everywhere – in which she lies in bed, semi-nude (a seventies' public explicitness would be out of order) and asleep (evoking dreams, hers and ours). The reference plays off that historical mythic fusion of Beauty and Truth which located its ideal in the nude female form. Colette does leave open any distinctions between acting and acting out, giving to her "show" the sense of an episode from a life. Living a "role" is perhaps contemporary myth-making, and her choice of a model from the past emphasizes that consistent process.